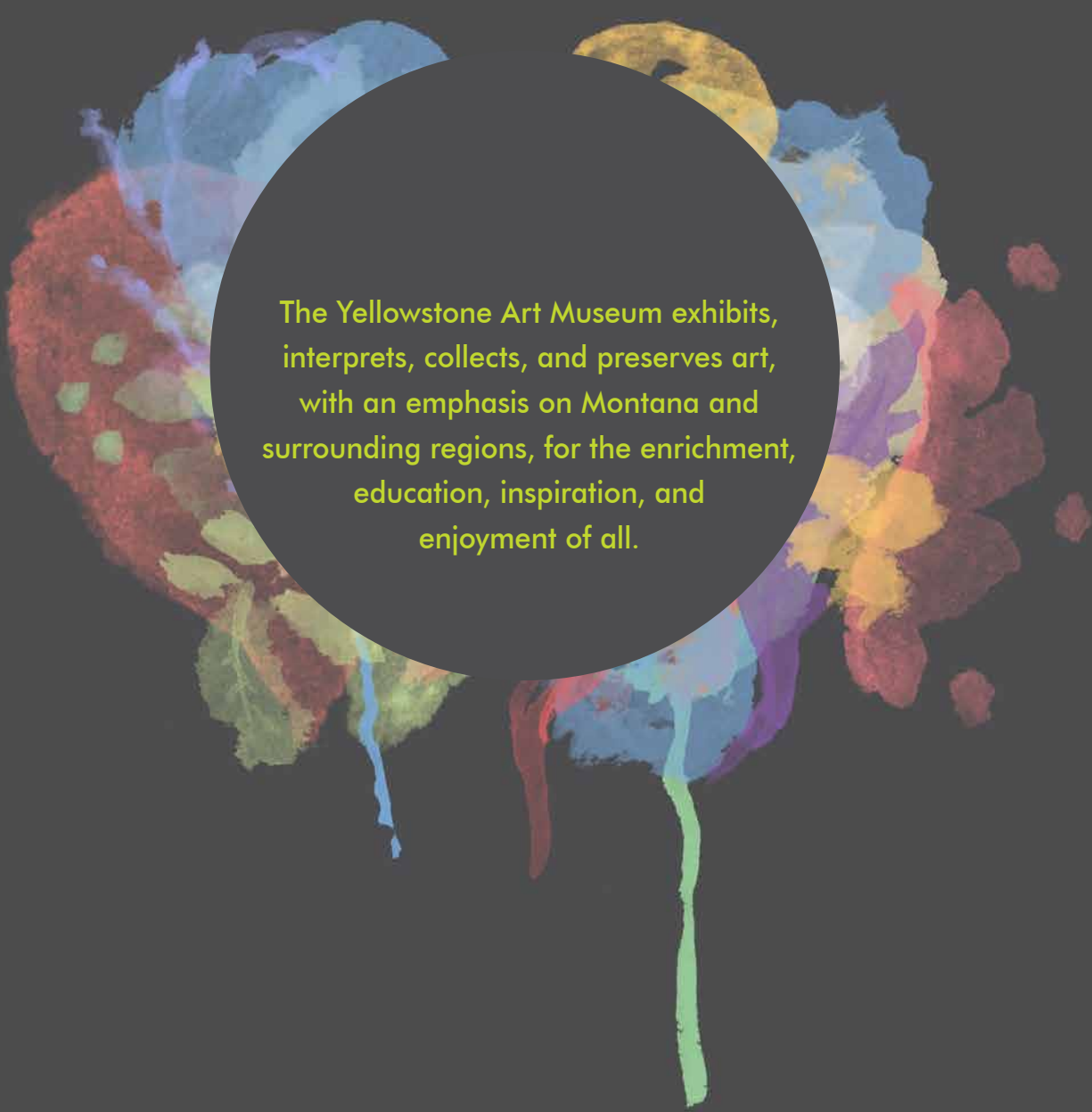




2015–2016 ANNUAL REPORT



yellowstone**art**museum



The Yellowstone Art Museum exhibits,
interprets, collects, and preserves art,
with an emphasis on Montana and
surrounding regions, for the enrichment,
education, inspiration, and
enjoyment of all.

VISION STATEMENT

Be an extraordinary cultural destination for creative exchange.

CORE VALUES

We value **ART**.

We value imagination and the passionate education of enthusiastic and curious minds of all ages.

We value a diverse community that cherishes its memories and aspires to an exceptional future.

We value a place to live that is enhanced through engaging art of uncompromising quality.

ADMISSION

Members always free.
\$6 adults, \$3 students with I.D. and children 6–18,
children under 6 free,
\$4 discount rate (please inquire)
First Saturday Dollar Day—\$1 admission on the first Saturday of each month.

HOURS

Tuesdays, Wednesdays, and Saturdays, 10 a.m.–5 p.m.,
Thursdays and Fridays, 10 a.m.–8 p.m.,
Sunday, 11 a.m.–4 p.m.
Closed Mondays

ADDRESS

401 North 27th Street
Billings, Montana 59101
406-256-6804
www.artmuseum.org

table of contents

Executive Director's Report	2
Board of Trustees, Staff, and National Council	3
Exhibitions in 2015–2016	4
The Permanent Collection	8
Educational Programming	10
Special Museum Events	13
Expansion Campaign	14
Volunteers	16
President's Awards for Service to the Arts	16
Statement of Financial Position	17
Support and Membership	19



executive director's report for the year 2015-2016

It is always a rewarding exercise to reflect back on the exhibitions, programs, and events that mark every year at the Yellowstone Art Museum. The past year was one for an unusually high level of achievement. Not least among the accomplishments that we proudly trumpet was achieving national accreditation from the American Alliance of Museums, a long-sought accolade. We are also pleased to note that every single temporary exhibition was curated in-house by our own talented staff. We introduced a new art-related special event—Masquerade Party—which sold out in this, its first year, and we secured funding to pursue some much-needed restoration work on our historic jail building. Details of these and other programs and activities throughout the year follow.

The Yellowstone Art Museum has been greatly aided during the past few years by the revenues available from our growing endowment. It is not possible to overstate the value and importance of this kind of stable support. With public support lower the national average, comparatively few private foundations funding the arts in Montana, and a sparse state population, fundraising for an arts organization presents its challenges. Knowing all of these factors, it is again with a combination of humble gratitude and great pride that we thank the donors, supporters, volunteers, artists, tourists, and others who have made it possible for the YAM to achieve many fine goals and end another fiscal year in solid financial shape. Our mission is to serve our audiences, and it is our audiences who make it possible for us to do it.

A highlight of the year was the launch of the *Montana Masters* exhibition series, funded in part by a multi-year grant from the federal Institute of Museum and Library Services (IMLS). IMLS has helped us in the past—notably with the founding of our art outreach program in its current guise—and we could not be more pleased that the peer reviewers who read our application saw the value of our new program to train a new interpretive lens on a diverse group of the state's mature artists. In 2015-2016, the first three exhibitions in this series opened focused on Willem Volkersz, Isabelle Johnson, and Harold Schlotzhauer. The series will continue for a minimum of two more fiscal years. Other exhibitions throughout the year seized on opportunities to host special loans, a crowd-sourcing experiment called *Art in Action* (an unqualified success), a select exhibition of the fine nature photography of Michael Sample, and small cameo exhibitions featuring work by our artists-in-residence. The YAM continues to host some of the largest and most



Photo provided by the KTVQ

The YAM earned national accreditation by the American Alliance of Museums, which was publicly announced at Art Auction 48 on March 5, 2016. This honor is awarded to fewer than 3% of American museums.



select art-related special events, including Art Auction (its 48th year) and Summerfair (its 37th year), still the models for similar events across the region. For these and other programs, about 40,000 people either crossed our threshold or took advantage of outreach offerings.

Through a combination of private and public support, the YAM ended the year well, addressing some long-deferred building needs and growing our array of exhibitions, education, adult programs, and events. We owe a debt of gratitude to our supporters, be they major grantors or Dollar Day visitors, and we renew our pledge to you, our audience, to continue to find new ways to pique your curiosity and meet our mission to enrich, educate, inspire, and provide enjoyment for everyone.

A handwritten signature in black ink, appearing to read 'Robyn G. Peterson'.

Robyn G. Peterson
Executive Director

board of trustees

Kris Carpenter
President

Kevin Stenberg
President-Elect

Paul Cox
Vice-President

Joy Culver
Treasurer

Linda Shelhamer
Immediate Past President

Jacqueline Allen
Secretary

Ellen Alweis
Deborah Anspach
Dan Burkhart
Dan Carter
John Greenberger
Peter Habein
Dave Hummel
Brad Jensen
Bill Lucas
Trish Matteson
Thomas Minckler
Gary Oakland
Kim Olsen
Sharon Peterson
Dr. Donald Roberts
Carol Spielman
David Stensrud
Renée Tafoya
Jeremiah Young

Emeritus Trustees
Carol L. H. Green
Randy Jacobs
Gareld Krieg
Ted Lovec
Laurence Martin



staff

Robyn G. Peterson, *Executive Director*
Lisa Berke, *Finance and Administration Director*
Deeann Bice, *Custodian*
Bob Durden, *Senior Curator*
Linda Ewert, *Education Director*
Ashley Fagerstrom-Ündes, *Development Director* (until June 15, 2016)
Cassie Francisco, *Security*
Ken Haak, *Facility Rental Manager*
Liz Harding, *Associate Curator* (until April 29, 2016)
Kat Healy, *Special Events Coordinator* (until March 18, 2016)
Jet Holoubek, *Reception*
Jason Jam, *Community and Volunteer Coordinator* (from December 2, 2015)
Greg Lucas, *On-call Security*
Karla MacCatherine, *Finance and Administration Director* (from July 6, 2015)
Berenice Munson, *Education Program Coordinator*
Holly J. Netz, *Special Events Coordinator* (from April 7, 2016)
Jordan Pehler, *Museum Art Educator*
Ashley Pratt, *Volunteer and Community Coordinator* (until November 13, 2015)
Kelly Price, *Registrar*
Chuck Randall, *Security and Grounds*
Chaz Riewaldt, *Facility Manager* (from July 8, 2015)
Dixie Yelvington, *Marketing and Public Relations Coordinator*

national council

The YAM's National Council comprises artists, collectors, and authors who represent the Museum on a national level and support its mission and goals.

John Buck
Deborah Butterfield
Abe Hays
William I. Koch
Louise Menk
Carla O'Rorke
Nathaniel Owings
Joseph Poindexter
Jaune Quick-to-See Smith
Mark Stevens

exhibitions in 2015-2016

Every exhibition opened in 2015-2016 was curated by Senior Curator Bob Durden or Associate Curator Liz Harding, with the support of the curatorial department staff. It was a noteworthy achievement resulting in the fine exhibitions detailed below. The YAM was again fortunate to have the opportunity to host masterpieces by private lenders as well work created specifically by regional artists to exhibit for the first time at the YAM. The YAM's own permanent collection also served as a wellspring of curatorial ideas.

Exhibition Season Sponsors



David Orser and Ossie Abrams

With the continuing annual support of U.S. Bank and new exhibition season sponsors David Orser and Ossie Abrams, the museum debuted five larger temporary exhibitions and one smaller scale exhibition, while continuing to host exhibitions that had opened in the prior fiscal year. We continued to tell the story of art in Montana as illustrated by our permanent collection in *Boundless Visions*. The YAM also continued to make selected exhibitions developed by us available to travel to other museums throughout the country.



exhibiting the permanent collection



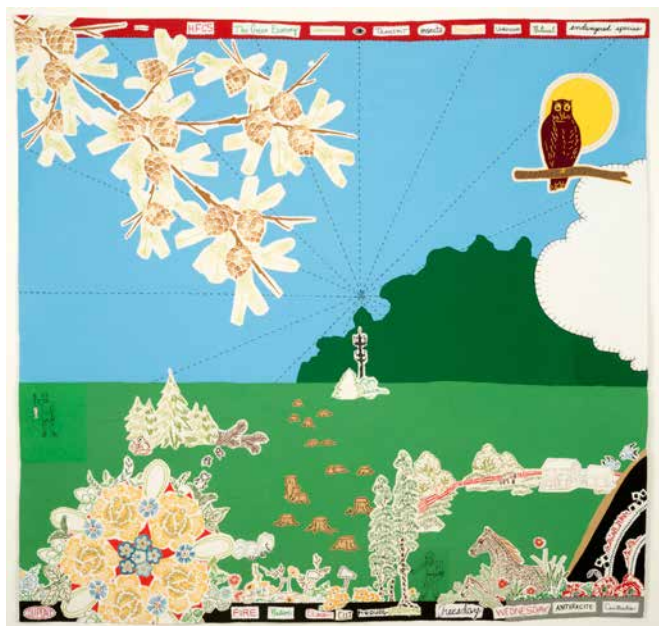
Boundless Visions

Ongoing

Featuring works from the permanent collections, this exhibition tells the story of art in Montana within a framework of themes with particular relevance to our area: land, human connections through time and space, tenacity, and experiment. The story is enriched by loans from artists and private individuals. We continue to encourage visitors to play favorites and participate in our Adopt-an-Artwork program, which permits anyone to show their support for works in the permanent collection while contributing to their long-term care.

*For the ongoing support of this exhibition, we thank:
David Orser and Ossie Abrams*

temporary exhibitions



Vantage Point:

An Episodic Tale by Maggy Hiltner

September 15, 2015–November 8, 2015

Incorporating embroidery she finds at antique shops, this Red Lodge, Montana, artist draws upon classic 1950s and 1960s imagery to evoke a sense of nostalgia, taking the cozy imagery in more serious and unexpected directions. Upon closer inspection, the seemingly idealized landscape in Vantage Point conveyed a deeper story and addressed environmental concerns. This exhibition took place during Hiltner's time as the YAM's artist-in-residence.

EXHIBITION SPONSORS

Supporting sponsors

American Title & Escrow, Ted and Bess Lovec

Betsy Scanlin and Jeff Anderson

Contributing sponsor

Marshall and Gwen Haferkamp



Persistent Memories:

Narrative Sculptures by Willem Volkersz

October 8, 2015–January 3, 2016

First in the YAM's Montana Masters series, this exhibition combined installations and sculptural works centered on Volkersz's response to Dutch World War II experience and his personal connection to the fates of children who went to his grade school. Additional work referenced his experiences as an avid traveler and immigrant. The exhibition was curated by Bob Durden and accompanied by a catalog, and the artist gave engaging public presentations over the course of the exhibition.

EXHIBITION SPONSORS:

Lead Sponsors

John W. and Carol L. H. Green

Institute of Museum and Library

Services, a federal agency

Contributing sponsor

American Title & Escrow,

Ted and Bess Lovec

Carol and Jim Spielman

Supporting sponsors

Dr. Donald and Carol Roberts

Bob Durden



"A Lonely Business": Isabelle Johnson's Montana

November 3, 2015–January 3, 2016

Second in the *Montana Masters* series, this exhibition of Johnson's work was the latest and largest of five exhibitions of her work that have been offered since the earliest years of the Yellowstone Art Center's operation; it was the first since Johnson's death in 1992. Drawn exclusively from the YAM's extensive permanent collection of Johnson's work, the exhibition included 64 works of art and 28 archival items. Curated by Bob Durden, the exhibition revealed the course of Johnson's career and the scope of her mature work. The exhibition was coordinated in conjunction with publication of a book of the same name that came out earlier (July 2015); the book was funded by the Tippet Rise Fund of the Sidney E. Frank Foundation.

EXHIBITION SPONSORS:

Title Sponsors

Theodore Waddell and
Lynn Campion

Supporting sponsors

Susan Scott Heyneman
Institute of Museum and Library
Services, a federal agency
Gareld and Barbara Krieg
Barb Skelton



Art Auction 48

January 21, 2016 – March 5, 2016

See **page 13** for a full description of Art Auction 48.



The Falcon's Eye: Nature Photographs by Michael Sample

March 24, 2016–August 21, 2016

Thirty-five newly produced digital prints represented a tiny selection of the vast output of beloved nature photographer Michael Sample. An additional selection of about eighty images was on view on a looping video. Curated by Liz Harding, the exhibition was a cross-section of Sample's work across his career from majestic national park vistas to intimate trailside details. Included with the exhibition was a gallery brochure with an essay by Michael's son Ryan and an introduction by Bob Durden. This exhibition was coordinated to travel statewide on a tour that will begin in 2017.

The YAM is grateful to our Business Members whose category of support contributes to the YAM's temporary exhibition program: Artcraft Printers and Stockman Bank.

EXHIBITION SPONSORS:

Title sponsors

David Orser and Ossie Abrams

Lead sponsors

Eide Bailly, LLP
Merrill Lynch–Spalding
Houghton Group
Gary and Melissa Oakland
Bill and Laverne Royer
Toucan Gallery

Supporting sponsors

Anonymous
Hewes and Susan Agnew
Dr. Ralph and Sheryl Costanzo
Bob and Shari Dayton
Cynthia Foster
Dona and Paul Hagen
David and Cynthia Hummel
Randy and Stacey Jacobs
Judy G. Johnson
Bill and Karin Lucas
Tim and Trish Matteson

Northwestern Energy

James and Christine Scott
Linda Shelhamer and Stephen Haraden
Wells Fargo Bank
Ron, Amy, and Ava Yates

Community sponsors

Anne Dietrich
Val Jeffries and Allen Powers
O² Architects, Kim and Don Olsen
Robyn G. Peterson
Stillwater Mining Company
William and Mary Underriner

Contributing sponsors

Joanne Berghold
Lisa and Jeff Berke
Frank and Kathy Cross
Donna M. Forbes
Davi Nelson
Carolyn Ostby
Sharon and Garde Peterson
Linda J. Snider
Yellowstone Bank



Harold Schlotzhauer: The Shape of Motion

March 24, 2016–July 3, 2016

This large exhibition of 144 objects served as a retrospective of Schlotzhauer's far-ranging career to date. It included works in all media from early prints and drawings to paintings, prints, sculptures, skateboards, surfboards, snowboards, kites, and mixed media works. This exhibition—a riot of color and form—examined Schlotzhauer's many eclectic sources of inspiration and the unifying theme of motion captured that is evident in all of his work. The exhibition was curated by Bob Durden and had an accompanying catalog with an essay by Elizabeth Guheen. Schlotzhauer gave a gallery talk in May to a large and appreciative audience. The YAM coordinated a skateboard deck design competition for adults and children on during the month of May with winners announced at the Billings skate park on June 26, 2016.

The YAM is grateful to our Business Members whose category of support contributes to the YAM's temporary exhibition program: Hilltop Inn and Riversage Billings Inn.

EXHIBITION SPONSORS

Title sponsors

Laurence and Ruth Martin

Lead sponsors

Anonymous

Deborah Anspach and Dr. John Hanson

Mary Alice Fortin Foundation
for Youth Enrichment

Institute of Museum and Library
Services, a federal agency

Diane Boyer Jerhoff

Supporting sponsors

Bob Durden

ExxonMobil

Community sponsors

Deborah Butterfield
and John Buck

Discontent
Brian Reed



Primal Urges

May 6, 2016–September 4, 2016

Prompted by a large loan of objects from an anonymous lender, this exhibition included four life-sized bronzes (three sculptures by Aristide Maillols and one by Alexander Archipenko), paintings by Fernand Léger, Paul Signac, Joan Miró, André Lhote, George Clausen, Toyen, and Lawrence Alma-Tadema. Around a figural theme relating to elemental, basic pursuits, Bob Durden curated an exhibition that also include work from the permanent collection by Rudy Autio, Robert DeWeese, Troy Dalton, Jaune Quick-to-See Smith, Robert Royhl, and Kathryn Schmidt.

EXHIBITION SPONSORS

Anonymous

Dr. Donald and Carol Roberts

the permanent collection

The Yellowstone Art Museum's permanent collections continued to grow through the generosity of donors. Donors may offer works of art or the funds to acquire works of art. The YAM added twenty-four works to the permanent collections from eleven individuals and families. Some of these works were from a large gift received in 2005 from Joseph and Holly Poindexter to augment the existing Poindexter Collection; this review process began in 2013-2014 and continued in 2015-2016.

ACCESSIONS TO THE PERMANENT COLLECTION

2015.005	Harold Schlotzhauer, <i>Stop Gap</i> , 1983, acrylic and vinyl on canvas, gift of the Winegardner family
2015.006.001	Freeman Butts, <i>Journal</i> (70 pages), 1966-1967, graphite on paper, donated by the children of Freeman and Daisy Butts
2015.006.002	Freeman Butts, <i>Journal</i> (23 pages), 1975, graphite on paper, donated by the children of Freeman and Daisy Butts
2015.006.003	Freeman Butts, <i>Journal</i> (48 pages), 1965-1973, graphite on paper, donated by the children of Freeman and Daisy Butts
2015.007.001	Sonia Gechtoff, <i>Untitled</i> , graphite on paper, 1958, Poindexter Collection
2015.007.002	Sonia Gechtoff, <i>The Voyage</i> , oil on canvas, 1960, Poindexter Collection
2016.001.001	Duffy, <i>Untitled</i> (#14), collage, 1959, Poindexter Collection
2016.001.002	Duffy, <i>Untitled</i> (#15), collage, pen and marker, 1958, Poindexter Collection
2016.001.003	Duffy, <i>Untitled</i> (#16), collage on paper, 1958, Poindexter Collection
2016.001.004	Gene Hedge, #6, collage, 1959, Poindexter Collection
2016.001.005	Dorothy Heller, <i>Untitled</i> , watercolor on paper, 1954, Poindexter Collection
2016.001.006	Dorothy Heller, <i>Untitled</i> , watercolor on paper, 1954, Poindexter Collection
2016.002	Kevin Red Star, <i>Hopi Snake Dancer (Priest)</i> , acrylic on canvas, circa 1975, gift of Ken and Ann Shesne
2016.003	Willem Volkersz, <i>Childhood (Lost)</i> , mixed media, 2010, gift of the artist
2016.004.001	Jean Albus, <i>Fertile Ground</i> , ink on photographic paper, 2014, museum purchase with funds from an anonymous donor
2016.004.002	Neal Ambrose-Smith, <i>The Maybe Wheel</i> , print, 2014, museum purchase with funds from an anonymous donor
2016.004.003	Jerry Iverson, <i>Darwin's Tree</i> , mixed media on fiberboard, 2011, museum purchase with funds from an anonymous donor
2016.005	Marcia Selsor, <i>Thrown Vessel</i> , saggar-fired porcelain, 2016, museum purchase with funds from an anonymous donor
2016.006	Catherine Courtenaye, <i>Phraseology</i> , oil on canvas, 2007, gift of Gary B. Carson
2016.007.001	Bill Stockton, <i>Brush</i> , oil on paper, 1994, gift of Karen Kallay in memory of Jean Baucus
2016.007.002	Bill Stockton, <i>The Green Hillside</i> , oil on paper, 1994, gift of Karen Kallay in memory of Jean Baucus
2016.008.001	Edith Freeman, <i>Along Cottonwood Creek (A/P)</i> , woodblock print, 1979, gift of Todd Preston in memory of Tim and Joni Preston
2016.008.002	Edith Freeman, <i>Along Cottonwood Creek</i> , woodblock, 1979, gift of Todd Preston in memory of Tim and Joni Preston
2016.009	Theodore Waddell, <i>Winter Sheep Drawing #12</i> , mixed media on paper, 1990, gift of Ed and Jessica Stickney

DEACCESSIONS

None



LOANS TO AND FROM THE YAM

Incoming loans or permanent collection works exhibited in temporary exhibitions

- *Boundless Visions*, 97 objects from the permanent collection, four objects from four lenders.
- *48th Annual Art Auction*, 179 objects
- Twenty-two objects were borrowed from several anonymous lenders.
- One object was borrowed for *Vantage Point: An Episodic Tale* by Maggy Rozycki Hiltner from the artist.
- Eighteen objects were borrowed for *Persistent Memories: Narrative Sculptures* by Willem Volkersz, from the artist. One object was included from the permanent collection.
- One hundred eight objects were borrowed for *Harold Schlotzhauer: The Shape of Motion*, from the artist. Thirty-six objects were included from the permanent collection.

The total number of objects borrowed for temporary exhibitions in 2015-2016 was 108, plus the works in the annual Art Auction.

Total number of objects from the permanent collection featured in exhibitions in 2015-2016 was 134.

THE YAM'S EXHIBITIONS ON THE ROAD

- One painting by Robert De Niro, Sr., lent to the University of Buffalo, Buffalo, New York.
- Thirty works of art from the Montana Collection were lent to Hilliard University, Lafayette, Louisiana.
- Five objects from the YAM's Community Collection were lent to the Yellowstone County Courthouse, Billings, Montana.
- Fifteen object from the YAM's Community Collection was lent to the GSA for the federal courthouse, Billings, Montana.
- *"A Lonely Business": Isabelle Johnson's Montana*, sixteen objects from the permanent collection* traveled to the Charles M. Bair Family Museum, Martinsdale, Montana.
- *Hallowed Absurdities: Work by Theodore Waddell*, thirty objects from one lender, traveled to the Mulvane Art Museum, Topeka, Kansas.

LONG-TERM INCOMING LOANS

Fourteen works were renewed on long-term loan from seven private individuals and organizations.



Robert De Niro, Sr., *House in Buffalo Park*, 1971-1975, oil on board, 30 x 36 inches. Gift of Elinor Poindexter, 1990.078.



Theodore Waddell, *A Salt Weapon*, 2013, mixed media. Included in traveling exhibition *Hallowed Absurdities: Work by Theodore Waddell*.

educational programming for children, families, and the community

"Thank you for showing me cool art work ... I love what I saw in the Museum. Like the paintings photographs and the sculptures. The beading was the one I like the most. I love the things that we made. The Bag, Painting plus oil pastels and the Will James. I appreciate you being my guide + the art. I didn't know that art was such a cool thing to do. Now I love to do art anytime, anywhere. The Art Museum was a wonderful place to be." **Your friend, Kyonna**

"Thank you so much for guiding our group from Highgate Senior Living through the Isabelle Johnson Collection. You did a great job describing her work and inviting responses from our group. Thank you for treating some of Billings's most vulnerable seniors with dignity and respect. Everyone left with a smile." **Shirlee Philips and Marge Schultz**

This was an exciting and commitment-laden year for the education department. Exhibitions as diverse as *Harold Schlotzhauer: The Shape of Motion to Primal Urges*, *The Falcon's Eye: Nature Photographs* by Michael Sample, and *Persistent Memories: Narrative Sculptures* by Willem Volkersz gave the education department a wide range of art to present to children. We had great participation from kids as a whole for our skateboard design competition and exhibition (in conjunction with the Schlotzhauer exhibition) on the Donna Forbes Wall. The year combined pretty weighty stuff and lots of fun—a great mix for learning. The privilege of sharing these explorations never grows old!

In August, a group of professionals from the art education community sponsored by the Montana Arts Council began the grueling work of establishing new arts standards for education for the state of Montana. This came on the heels of a two-year national review and, ultimately, the establishment of new education standards at the federal level. Within the arts, the standards moved from general content standards across all artistic disciplines to five distinct artistic disciplines: visual arts, media arts, dance, theater, and music. Our first meeting in Great Falls included experts from across Montana. Office of Public Instruction Superintendent Denise Juneau appointed a sixteen-member committee to consider recommendations presented to them by educators and artists from across the state. Denise Juneau states that "It's a big shift for arts education standards, but I think a good one and a necessary one." ... "Indian Education for All will be integrated right into the language of the standards, which I think is really important." We continued this work across the state from our desks until these standards were adopted by the Montana Office of Instruction in the spring of 2016. Full implementation will occur in the 2017-2018 school year.

In October the biennial Docent Symposium was held in Cincinnati. Education Director Linda Ewert accompanied four docents: Linda Snider, Judy Johnson, Karen Fried, and Bess Lovec to the symposium. As always, this symposium served as an avenue for learning and connecting to docents and museums across the United States and Canada. Typically, docents who attend this symposium gain a deeper

appreciation of the title "Docent." This year, Bess Lovec secured a grant to attend. Exciting to us it that our own Karen Fried was elected to the Docent Symposium board. The YAM has a history of docent advocacy, with the much-missed Pat Etchart having long served at the national level.

Also in October, Education Director Linda Ewert traveled to the Mountain-Plains Museum Association conference in Wichita, Kansas, to present *Invest in the Future: Art Education on Our Reservations*. She was accompanied by MSU-Billings Director of Indian Affairs and former board member Reno Charette and Molly Murphy, an artist represented in our permanent collection and now living in Tulsa, Oklahoma. This was a wonderful opportunity to talk to a larger audience about our successful programs and get to know these two exceptional women and their unique insight into our community.

Later in the fall, staff participated further in our wider professional community. Education staff spoke at the annual Montana Art Gallery Directors' Association (MAGDA) conference about the YAM's docent program. YAM staff also hosted an art teachers' reception during the Montana Education Association / Montana Federation of Teachers (MEA/MFT) conference. Thus, not only do we provide the perfect venue for art education, we help to secure its future by an aggressive and committed approach to sharing what we do and exploring what is new in our field.

Our school programs continue and grow each year. The children from our outreach programs are as excited when we visit them as when they visit us. The kids of Yellowstone and the surrounding counties understand who owns the Yellowstone Art Museum—they do. At the Annual Art Auction and throughout the year, the education department has been the grateful recipient of thousands of dollars from dozens of donors who give with a clear understanding of the importance of art education.

The Montana Women's Prison program continues. It is supported in full by a grant from the Tippet Rise Fund of the Sidney E. Frank Foundation. This program involves the YAM coordinating a different artist every other month to present two two-hour classes for approximately twenty women. The program is valued by all who participate. The art that is created—and perhaps even more the process that is involved—is meaningful on many different levels. The program is designed to teach the importance of problem-solving, exercising creativity in a positive and productive way, and seeing a project through to completion. Participants learn to accept the process of creating (as well as the result) and take pride in a job well done.

Senior Art Connection tours continue to draw participants at our area retirement homes. These experiences, designed and championed by docent Karen Fried, have become meaningful to both our visitors and the docents who lead the tours. Refreshments and discussion follow afterward in the Education Studio.

Last but not least, the education department's part in helping the YAM to secure national accreditation from the American Alliance of Museum was a great reward. It was an honor long sought. We have always believed in our excellence, and now we have the distinction to prove it. The accreditation review process was rigorous, and we gained many insights into our own institution. Mainly, however, we affirmed the dedication and commitment of our community, and their willingness to support and champion the Yellowstone Art Museum.



Education Program Support

The YAM's pre-K through 12 art education programs, both onsite and outreach, enjoy support from new and longstanding supporters.

Major funder for 2015-2016

Tippet Rise Fund of the Sidney E. Frank Foundation
Kathryn Caine Wanlass Charitable Foundation

Supporting sponsors

Tim and Trish Matteson
Phillips 66
Sam and Judy McDonald Foundation
Wyo-Ben, Inc.

Community sponsors

ExxonMobil
MDU Resources Foundation

Cost-sharing partners

Billings School District
Crow Agency Elementary
Hardin School District
Head Start
Shepherd High School
United Way

Additional support

Cenex / CHS
Downtown Billings Alliance's signal box wrap program

Pace-setting donors to Art Auction 48's Lot 2016 supporting art education

First Interstate Bank
Tim and Trish Matteson
Gary and Melissa Oakland

Supporting donors to Art Auction 48's Lot 2016 supporting art education

Paul and Rachel Cox
Joy and Gene Culver
Bob and Shari Dayton
Kay Foster and Mike Mathew
Chuck Hingle and Susan Ogden
Jane and Terry Indreland
Lindsey James
Greg and Shannon Burns Johnson
Bill and Karin Lucas
Bob and Linda Merchant
Martha and Blake Mitchell
David Orser and Ossie Abrams
J.R. and Amy Reger
Don and Carol Roberts
Susan Shelhamer
Carol and Jim Spielman
Ryan and Molly Stevens

...and all of the additional donors to Art Auction 48's Lot 2016.

YAM Tours and Events

32 meetings a year, average of 25 docents

Art Suitcase Program

92 combined classroom presentations for 4,044 children

Museum Tours

Children's tours served 2,296
 Adult tours served 284

Senior Art Connections

Crow Agency Program

Gathering 40 works of children's art and designing an exhibition from the 3rd, 4th, 5th, and 6th grades of our Crow Agency program for travel to institutions across Montana.

Docent Second Saturdays: Art for Kids

8 classes per year, averaging about 30 kids each

Regional Field Trips

Docents visited Wyoming artist Neltje's studio

Young Artists' Gallery Exhibitions

The YAM hosted nine exhibitions of student work from:

Senior High School, Billings, MT

Hardin 6th grade, Hardin, MT

Shepherd High School, Shepherd, MT

Billings Public Schools (elementary, 8th grade)

Billings Public Schools (middle school, 5th grade)

Head Start, Billings, Laurel, and Lockwood, MT

Greybull High School, Greybull, WY

Crow Agency Public Schools, (4th and 5th grade)

In addition ...

Crow Agency 3rd grade exhibition at the Little Big Horn College Library

By the Numbers:

On-site Contacts

Children's tours	2,296
Adults tours	284
Events and Receptions	827
Programs	<u>1,933</u>
Total on-site	5,340

Off-site Contacts

Crow Agency	1,964
Off-site events (Summerfair and others)	775
Off-site visits (Suitcase program)	<u>4,044</u>
Total off-site	6,783

Grand total 12,123

Docents

Without a devoted and informed corps of docents, no art museum's education programs can succeed. The YAM acknowledges the generous gift of time and expertise offered by these docents:

Bill Anderson	Jean Mehlhaff
Edward Barta	Linda Merchant
Terese Blanding	Davilynn Nelson
Lee Ebdon	Eloise Oviatt
Stacie French	Jean Posusta
Karen Fried	Ginnie Pueringer
Peg Hart	Bob Rickels
Mary Beth Helgeson	Mary Salle
Joan Hesel	Susan Santala
Jane Indreland	Kenneth Smith
Judy Johnson	Lori Smith
Ann Jones	Linda J. Snider
Shauna Kerr	Brownie Snyder
LaFawn Kleinsasser	Carol Spielman
Sue Lane	Debbie Tierney
Bess Lovec	Kristi Tolliver
Trish Matteson	



Throughout the school year, docents meet weekly in the Education Studio.

educational programming for adults, including teachers

Experience Art Workshops

Workshops for adults continued in 2015-2016, appealing to diverse learners from teen to senior. Topics offered included zombie makeup, ceramic decorative tiles, urban sketchbook making, hybrid printmaking, drawing, pinhole and other photography, drawing comics, batik kite-making. Instructors included Kelly Price, Eloise Oviatt, Charlene Magargal, Steve Kuennen, Robin Earles, Edward Barta, Jason Jam, and Terry Zee Lee and Drake Smith.

Visible Vault Studio

There is no match for engaging in discussion with an artist whose work you admire. The YAM continued to offer this direct experience in the Gary and Melissa Oakland Artist-in-Residence Studio at the Visible Vault. The year began with Louis Habeck completing his residency and suggesting an exhibition topic for late 2016. Louis was followed by Edie Nadelhaft, our shortest-term resident. Edie, who is based in New York City and whose work was part of the YAM's 2014 exhibition *Face to Face, Wall to Wall*, spent an intensive ten days in the studio, combining travel in Yellowstone and using that travel as inspiration for her paintings. Maggy Rozycki Hiltner followed, for a three-month residency that saw the studio once again densely furnished with fiber art. The YAM was pleased to learn shortly afterwards that both Louis Habeck and Maggy Rozycki Hiltner had been chosen for Artist Innovation Awards by the Montana Arts Council. Maggy was followed by Neil Jussila, who began a year-long residency in November 2015. All of the resident artists hosted informal drop-in visitors and regular school tours, giving of themselves and benefiting in turn from the insights of new acquaintances.

Distinguished Speakers Series

In addition to artists, critics, and scholars, this series of special programs for adults includes performers, documentarians, authors, and other presenters whose programs enrich the YAM's temporary exhibition program. To those presenters who were able to donate their expertise, we extend our sincere thanks.

July 23, 2015

Walk and talk with botanist Megan Poulette, Assistant Professor of Environmental Science and Botany at Rocky Mountain College, at the Montana Audubon Education Center

Presented in conjunction with *The Botanical Series: Photographs by Gerald Lang and Jennifer Anne Tucker*

August 14, 21, 28, 2015

Jazz Series with live music by The "Do-Oh," pianist Philip Aaberg, and the Alex Nauman Trio
Presented in conjunction with *The Other Side of Midnight: Paintings and Prints by Adolf Dehn*

September 17, 2015

Poetry reading by Cara Chamberlain from her new collection, *The Divine Botany*
Presented in conjunction with *The Botanical Series: Photographs by Gerald Lang and Jennifer Anne Tucker*

October 1, 2015

"Seeds 'n' Stems: A Panel Discussion about Cannabis"
Moderated by Margaret Beeson, N.D., medical director and owner of the Yellowstone Naturopathic Clinic. Panelists Terry Bouck, superintendent of the Billings school district; Dr. Jack Herold, oncologist at Bozeman Deaconess; Mort Reid, president of the Montana Cannabis Information Association; Rich St. John, chief of the Billings police; and Keith Strong, retired federal magistrate judge
Presented in conjunction with *The Botanical Series: Photographs by Gerald Lang and Jennifer Anne Tucker*
Sponsored in part by Humanities Montana

October 15, 2015

Dr. Helga Aurisch, Curator of European Fine Art, Museum of Fine Arts, Houston "Landscape and the Science-Art Connection"

Presented in conjunction with *The Botanical Series: Photographs by Gerald Lang and Jennifer Anne Tucker*
Sponsored by the Michael and Karen Fried Community Education Fund

October 29, 2015

Willem Volkersz artist's talk
Presented in conjunction with *Persistent Memories: Narrative Sculptures by Willem Volkersz*

November 6, 2015

Maggy Rozcyki Hiltner
Open house in the artist-in-residence studio

November 14, 2015

Performance by Slovak musicians Jozef Lupták on cello and Boris Lenko on accordion and piano

February 26 2016

Screening of *Art and Craft*, the documentary about art forger Mark Landis held at the Babcock Theater

March 2, 2016

Encore performance by Slovak musicians Jozef Lupták on cello and Boris Lenko on accordion and piano, joined by pianist and singer Baruch Myers and violinist Miloš Valent

May 19, 2016

"Revelations of a Life in Motion" gallery talk by artist Harold Schlotzhauer
Presented in conjunction with *Harold Schlotzhauer: The Shape of Motion*



Jazz Series musician Philip Aaberg in Montana Gallery



Maggie Hiltner in the Artist-in-Residence Studio



Slovak musicians playing in the Montana Gallery.



May and Harold Schlotzhauer, and Mary Ann Kelly



"Seeds 'n' Stems: A Panel Discussion about Cannabis" was lively and well attended.

special museum events

The YAM participated in ArtWalk, Strawberry Festival, Harvest Fest, Renaissance Faire, and other downtown and citywide events. The YAM is an active site for daytime, after hours, and weekend facility rentals, as well as offering its own art-related special events. The YAM was delighted to launch Masquerade Party in October 2015, a re-design of the event formerly called Beaux Arts Ball; the event sold out. Winterfair, Bridal Fair, Paint 'n' Sips, and other events occurred throughout the year. We summarize below our two largest fundraising events:

48th Annual Art Auction

March 5, 2016

The Art Auction repeated its recent successes, both in exceeding fundraising goals for the YAM's exhibition and education programs, and in benefiting artists by placing their work in homes and businesses across the country. In 2016, the selection was juried by Brandon Reintjes, Curator, Missoula Art Museum, Missoula, Montana.

Gross revenue: \$321,439
Net raised for exhibitions and education: \$133,995
Artists: 161 artists provided 54 live auction works, 8 Quick Draw works, and 125 silent auction works
Estimated attendance: 403

ART AUCTION SPONSORS

Title sponsor:

The Oakland Companies

Lead sponsors:

Intermountain Distributing

Supporting sponsors:

Corning Companies

Wipfli LLP

Yellowstone Surgery Center

Community sponsors:

Kismet Rug Gallery, LLC

Montague's Jewelers

Sanctuary Spa & Salon

Stillwater Mining Company

Contributing sponsors:

DiA Events

Hardy Construction

ART AUCTION ADVERTISERS

AA&E Architects

Action Electric

Billings Clinic

Café Italia

Carlin Extended Stay Hotel

Computers Unlimited

Corning Companies

Crowley Fleck PLLP

DiA Events

ExxonMobil

The Frame Hut & Gallery

Hardy Construction

Hilltop Inn

Holiday Stationstores

Intermountain Distributing

Kismet Fine Rugs

Log Cabin Bakery

Mac's Floral

McCormick Café

Metric Wrench

Montague's Jewelers

Moulton Bellingham, P.C.

NorthWestern Energy

The Oakland Companies

Pepsi-Cola Bottling Company

Perkins Family Restaurants

Raven's Café d'Art

Riversage Billings Inn

Sign Products, Inc.

St. Vincent Healthcare

Stillwater Mining Company

The Rex Restaurant Bar & Grill

Tippet Rise Art Center

U.S. Bank

Wetzel's Quality Cleaners

Wipfli LLP

Yellowstone Surgery Center

TABLE SPONSORS

Lisa and Jeff Berke

Virginia Bryan

Dan and Theresa Burkhardt

Dr. Ralph and Sheryl Costanzo

Terri and Robert Eddleman

Eide Bailly, LLP

Michael and Jeanette Englehart

First Interstate Bank

Michelle and Glenn Foy

John W. and Carol L. H. Green

John Greenberger

Edward Hughes and Bobby Anner-Hughes

Valeria Jeffries and Allen Powers

Diane Boyer Jerhoff

Kibler + Kirch

Tim and Trish Matteson

Montague's Jewelers

O² Architects, Kim and Don Olsen

The Oakland Companies

David Orser and Ossie Abrams

Sharon Peterson

Phillips 66

Dianne and Kenny Roesch

Sanctuary Spa & Salon, Kris and Larry Carpenter

Linda Shelhamer and Stephen Haraden

Erica Rose Simpson and Roxie Simpson

Linda J. Snider

Kevin Stenberg

Yellowstone Bank

Summerfair

July 11-12, 2015

Gross revenue: \$104,810

Net raised for exhibitions and education: \$27,162

Total number of vendors: 114 of which 94 were artist vendors

Estimated attendance: 9,500

SUMMERFAIR SPONSORS

Title sponsors:

Holiday Stationstores

Pepsi-Cola Bottling Company

Stillwater Mining Company

Lead sponsor:

Action Electric

ExxonMobil

Hardy Construction

Media sponsors:

Action Electric

98.5, The Wolf

Hot 101.9

KULR-8

Radio Billings

Community sponsors:

Billings Federal Credit Union

Crowley Fleck Attorneys, PLLP

Little Horn State Bank

NorthWestern Energy

Perkins Restaurants

Pita Pit

Red Robin

With thanks to these additional supporters:

Albertson's

Billings Hardware

Linda and David Eckhoff

Home Depot

The Joy of Living

Montana Brewing Company

Republic Services

Sam's Club

Shaggy Dog Pet Grooming

Tractor and Equipment

SUMMERFAIR ADVERTISERS

98.5, The Wolf

Action Electric

Billings Federal Credit Union

Bistecca

Crowley Fleck Attorneys, PLLP

ExxonMobil

The Frame Hut & Gallery

Hardy Construction

Holiday Stationstores

Hot 101.9

KULR-8

Little Horn State Bank

Marriott TownePlace Suites

NorthWestern Energy

Pepsi-Cola Bottling Company

Perkins Restaurants

Pita Pit

Pure Barre

Red Robin

Stillwater Mining Company

Time Out Sports

Turley Dental Care



Linda Ewert and Emma Bilstad at Summerfair 38.

Selected Other Events

Paint 'n' Sip with Louis Habeck, July 31, 2015

Bridal Fair, September 13, 2015

Paint 'n' Sip with Sonja Caywood, September 26, 2015

Afternoon Tea and Sale of Marie Halone's Catering Linens, October 11, 2015

Paint 'n' Sip with Carol (Spielman) and Carol (Welch), October 15 and 16, 2015

Masquerade Party, October 23, 2015

Winterfair, December 4-5, 2015

Valentine's Date Night, February 14, 2016

ArtWalk, five times throughout the year

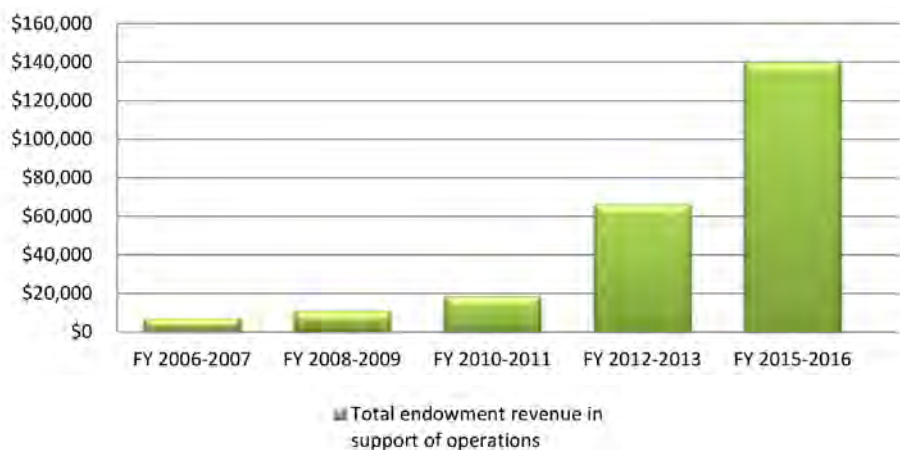
Jam at the YAM, several times throughout the year

expansion campaign

The Yellowstone Art Museum's Expansion Campaign—begun in 2006 with multiple capital, special project, and endowment goals—has, over time, evolved to become an ongoing campaign to build endowment for the future. In 2015-2016, the Campaign progressed modestly and continued to work to earn new endowment gifts and bequest pledges.

The growth in our endowment funds overall means that a growing percentage of the YAM's annual operating needs are met by this stable source of revenue. Net of depreciation, endowment revenue covered over 9% of the YAM's 2015-2016 operating budget. Our ambitious goal to reach three to four times this amount keeps our Expansion Campaign moving forward.

Total endowment revenue in support of operations



Endowment fund market values



The donor wall in the entry of the Visible Vault.

One new fund was established in 2015-2016, the Building Endowment. Founded with a gift from our own Facility Manager Chaz Riewaldt and his wife Bella, the revenue from this fund will support the YAM's physical plant. All of the YAM's named funds remain open to new gifts.

Gifts to all phases of the Campaign are cumulative. Several donors augmented their prior years' gifts and have moved up on the donors lists provided below as well as the Campaign's donor wall in the vestibule of the Visible Vault. We warmly thank them and all of the more than 650 Expansion Campaign donors.

Two investment managers handle the YAM's endowments, with oversight from the Finance Committee of the Board of Trustees. Funds established as of June 30, 2016 were:

Endowment Fund	supports general operations
Next Generation Education Fund	supports outreach and on-site children's art educational programs
Exhibitions Fund	supports curation and installation of temporary exhibitions, including publications and adjunct programs
Will James Endowment Fund	supports the conservation, care, exhibition, and interpretation of the Will James Collection
Miriam T. Sample Contemporary Art Preservation Fund	supports the conservation, care, exhibition, and interpretation of the Montana Collection
Patricia Etchart Docent Endowment	supports docent training opportunities
Wendy's of Montana and McDonald Family Art Education Fund	supports art education for children
Edna Marie and John M. Schiltz Children's Art Education Fund	supports art education for children
Lloyd Shelhamer Memorial Endowment	supports the exhibition of the Montana-based permanent collection
Al and Jayne Winegardner Fund for Exhibitions	supports temporary exhibitions of Montana artists' work
Building Endowment	supports the care and maintenance of the museum's facility

expansion campaign donors

The following list reflects cumulative giving to the Expansion Campaign since its launch in 2006 through June 30, 2016. Names in *italic* indicate a gift fully or partially in-kind.

Please note: members of the Legacy Society are indicated by “**LS**” following their names. See the end of this list for additional information about the Legacy Society at the Yellowstone Art Museum.

Over \$1,000,000

Charles M. Bair Family Trust

\$500,000 – 999,999

William I. Koch
Miriam T. Sample †
Kresge Foundation

\$250,000 – 499,999

M. J. Murdock Charitable Trust
David Orser & Ossie Abrams

\$100,000 – 249,999

Bruce Anderson †
Milan † and Cynthia Foster
John W. and Carol L. H. Green
Henry Luce Foundation
The McDonald Family and
Wendy's of Montana
Gary and Melissa Oakland
Linda Shelhamer and Stephen Haraden

\$50,000 – 99,999

Anonymous
Dona and Paul Hagen - **LS**
Institute of Museum and Library Services
(IMLS)
Mary Louise Menk
Dr. Donald and Carol Roberts
Linda J. Snider
David Stensrud

\$25,000 – 49,999

Anonymous
BNSF Foundation
Dr. John and Patricia Burg
Kris and Larry Carpenter, Sanctuary Spa &
Salon, and The Joy of Living - **LS**
Dr. Ralph and Sheryl Costanzo
Anne Dietrich
First Interstate Bank and the First
Interstate Bancsystem Foundation
Jack † and Susan Scott Heyneman and
the Homer A. and Mildred S. Scott
Foundation
Gareld and Barbara Krieg
Jon Lodge
Ted and Bess Lovet - **LS**
Montana State Department of Commerce
(TIIP grant)
Susan Shelhamer
Stuart and Marie Simonsen
Harriett † and Edson † Spencer
Stillwater Mining Company
Wells Fargo
Yellowstone County

\$10,000 – 24,999

Anonymous
Dr. Hewes and Susan Agnew
Bill and Sandy Anderson
Jim and Claudia Baker
David and Jinx Brown
Dr. F. Douglas and Karla Carr
Bruce and Mary † Crippen
Robert and Shari Dayton
Eide Bailly, LLP
Patricia † and Leonard Etchart, and the
Etchart Family
Fanwood Foundation and Mark Stevens
Fred and Rose Marie Fleischmann
Kay Foster and Mike Mathew
Hancock Enterprises
Hardy Construction
James Haughey †
Intermountain Distributing and the
Broccopp Family
Valeria Jeffries
Diane Boyer Jerhoff
Ruth Kronmiller †
Laurence and Ruth Martin
Sam † and Judy † McDonald
Thomas Minckler and Abigail Hornik
NorthWestern Energy
Mac Oliver †
Jim and Lin Roscoe
Vince Rose †
Sigel L. and Beverly T. Ross - **LS**
Lori VanSky Schmidt † - **LS**
James and Christine Scott
James Scott, Jr.
John and Karen Shelhamer
Dr. William and Suzanne Smoot
Soroptimist International
Kevin Stenberg and Perkins Restaurants
Susan Sullivan and Steve Zabawa
Patti Townsend

\$5,000 – 9,999

Bureau of Land Management
Ballard Petroleum in memory of Wayne
Ewert
CTA Architects Engineers
Conoco Phillips
Joy and Gene Culver
Donald Frazier
Dr. Michael and Karen Fried
Galusha, Higgins and Galusha, P.C.
Wayne and Traci Hirsch
Terry and Mary K. Housinger
Dr. Stephen and Marilyn Kramer
MDU Resources Foundation
Cal and Judy Northam
Kim and Don Olsen, O² Architects
James and Carla O'Rorke
Payne Financial Group, Inc.
Dr. Walter and Mary Peet
Dale and Judy Peterson
Robyn G. Peterson
Lainey J. Reynolds-Keene
Joseph S. Sample
Dr. Kristi Schied and S. H. Schied
Sign Pro
Sign Products, Inc.
Carol and Jim Spielman
Sue Stanaway and Daren Stanaway
Howard Sumner and Sue Anders and The
Sumner Source
Superior Concrete
Loris Toole
Bob and Liz Wilmouth
Al † and Jayne † Winegardner

\$2,500 – \$4,999

Joanne Beringer and Henry Dater
Michael and Nancy Downing
Corky and Vanessa Brittan
George B. Duke
Bob Durden
ExxonMobil
Max and Jeanine Griffin
Roger and Darla Huebner
Michael and Karen Mace
Law Offices of Gavin W. Murphy
Jody Olson
Nancy and Butch † Ott
Chaz and Bella Riewaldt
Riversage Billings Inn
Kenneth A. Schlenker
Jean Sutherland
Steve and Pauline Tostenrud
Townsquare Media
Tri-Jack Design Products Co.
Theodore Waddell and Lynn Campion
Zee Creative

\$1,000 – 2,499

Anonymous
Jeffrey B. Anderson and Elizabeth Scanlin
Deborah Anspach and John Hanson
Carol and Daryl Beam
Henry and Kay Bedford
Ron and Jeanne Bender
Lisa and Jeff Berke
Duncan and Vicki Burford
Rick and Dena Burt
Nick and Linda Cladis
Bill and Colette Davies
Linda M. Davis
Don † and Nollie Lei Dawson
Steve and Linda Degenhart
Pat Emerson
Linda Ewert
Ashley Fagerstrom-Ündes
Karen Ferguson
Charlie and Joan Fritz
Robert and Kathy Griffin
Carl and Marriana Hansen
Hilltop Inn
Jane and Terry Indreland
Diane Jung
Terry Zee Lee and Drake Smith
Kathe and William McDaniels
Charles † and Patti Morledge and the
MKM Foundation
Pat and Kyle Neary
Steve and Jenny Nitz
Michael and Susan O'Leary
B. B. and Nita Palmer
Sharon and Garde Peterson
E. Victoria Porter and Michael Winnes
Bruce and Carol Ready and Merrill Lynch
Michael † and Barbara Sample
David Slovak
Mary Jane and E. Stewart Taylor
James and Linda Thompson
Tierney Fine Art
Bill and Debbie Tierney
Obert and Ginny Udem
Bill and Mary Underriner
Frank and Rebecca Vinton
David and Sara Weston Foundation
Ron and Amy Yates

\$500 – 999

Action Electric
Alphagraphics
Ellen and Don Alweis
Bresnan Communications
Norma and Gary Buchanan
Dr. Paul and Mary Cook
Donna Forbes
Cicely Gargaro
Timothy Gordon Appraisals
Steve and Joni Harman
Tom Hohn and Hohn Engineering
Brad and Carole Jensen
KTVQ
Jim and Marie Kelly
Max Media / KULR-8
Gordon McConnell
Marilynn Miller
Tom Nelson and Thomas Nelson Catering
Ralph O'Connor
Bruce and Eileen Pinkerton
Allen Powers
Michael and Cara Schaar
Mary Jo Sheppard
Tom Singer and Evey LaMont
Patrick Smith and Mary Hernandez
Susan and Don Sommerfeld
Kris Spanjian and Ray Gilbertson
Stockman Bank
Jim and Anne Taylor
Richard and Patricia Vettel-Becker
Gwenn and John T. Winkhaus

Gifts up to \$500

We gratefully acknowledge over 450 additional Expansion Campaign donors who have made cumulative gifts up to \$500. Because a portion of upper-level membership dues helps build the YAM's endowment, many of our Campaign donors have helped us make progress through their personal or business membership contributions. All Campaign giving is cumulative. Donors may move up on the list through additional gifts and upper-level memberships.

Legacy Society - LS

The Legacy Society honors those who have remembered the Yellowstone Art Museum in their estate plans and who wish to encourage others to do the same. The Yellowstone Art Museum acknowledges and honors those friends of the YAM who have made a commitment to ensure that future generations will be able to enjoy the visual arts of Montana and the surrounding region through excellence in exhibitions and art education programs.

M. Kristine Carpenter
Don and Marilyn Floberg
Paul and Dona Hagen
Ted and Bess Lovet
Bev and Sig Ross
Carol Spielman

Legacy Society members who have passed away and whose bequests are currently at work supporting the YAM's programs:

Lori VanSky Schmidt †

volunteers and president's awards

volunteers

Volunteer Group	Number in Group	Total Hours	Total Value
Board of Trustees (includes emeritus)	29	1,002	\$40,080
Docents	33	1,981	\$43,582
Teen Ambassadors	17	150	\$1,500
Art Auction	105	340	\$5,100
Summerfair	88	486	\$7,290
Curatorial support	9	489	\$9,780
All other	28	517	\$7,755
Grand Total:	309	4,965	\$115,087



Volunteers at Art Auction 48

president's awards for service to the arts

In July 2015, the President of the Board of Trustees was pleased to bestow awards on individuals and organizations who demonstrated extraordinary or longstanding support for the arts and for the Yellowstone Art Museum.

PHILANTHROPISTS OF THE YEAR

Dona and Paul Hagen

CORPORATE PHILANTHROPIST OF THE YEAR

Sidney E. Frank Foundation

DOCENT OF THE YEAR

Bess Lovec

EDUCATOR OF THE YEAR

Amy Chapple, Hardin Middle School

VOLUNTEER OF THE YEAR

Myrna Martinson

ARTIST OF THE YEAR

Theodore Waddell



Annual Members' Meeting 2015 in the Murdock Gallery



Peter and Cathy Halstead and Donna Forbes holding the newly released book on artist Isabelle Johnson



Dona and Paul Hagen



Amy Chapple



Myrna Martinson



Bess Lovec receiving award from Linda Ewert



Theodore Waddell receiving award from Bob Durden

comparative statements of financial position

YEARS ENDED JUNE 30, 2016 AND 2015

		6/30/2016	6/30/2015
ASSETS			
	Cash and cash equivalents	\$ 582,170	\$ 807,713
	Receivables	242,122	104,040
	Inventories	3,647	4,304
	Prepaid expenses	28,419	38,962
	Total Current Assets	856,358	955,019
	Long-term receivables	417,878	480,592
	Endowment	3,165,062	3,178,197
	Property and equipment	6,069,109	6,172,989
	Total Noncurrent Assets	9,652,049	9,831,778
TOTAL ASSETS		\$ 10,508,407	\$ 10,786,797
LIABILITIES			
	Accounts payable	\$ 47,388	\$ 42,355
	Accrued payroll	45,190	36,420
	Deferred revenue	170,570	179,962
	Line of credit	21,693	
	Current portion of long-term debt	28,101	15,000
	Obligations under split-interest agreements	9,112	9,112
	Total Current Liabilities	322,054	282,849
	Obligations under split-interest agreements	234,097	237,715
	Notes payable		28,101
	Total Noncurrent Liabilities	234,097	265,816
TOTAL LIABILITIES		\$ 556,151	\$ 548,665
NET ASSETS			
	Unrestricted	\$ 6,289,685	\$ 6,906,428
	Temporarily restricted	776,002	507,023
	Permanently restricted	2,886,569	2,824,681
TOTAL NET ASSETS		\$ 9,952,256	\$ 10,238,132
TOTAL LIABILITIES AND NET ASSETS		\$ 10,508,407	\$ 10,786,797



audited statements of activities

YEARS ENDED JUNE 30, 2016 AND 2015

	2016	2015
REVENUES, GAINS, AND OTHER SUPPORT		
Admissions	\$ 47,209	\$ 63,329
County appropriations	158,703	152,181
Other government support	91,308	49,530
Grants and donations	422,844	500,368
Investment income	13,378	151,751
Membership dues	80,170	103,022
In-kind donations	110,141	128,928
Consignment gallery	26,711	21,522
Special events	341,826	388,017
Gifts to endowment & annuities	61,888	138,176
Rental income	35,847	39,593
Other income	177,823	137,426
TOTAL REVENUES, GAINS, & OTHER SUPPORT	\$ 1,567,848	\$ 1,873,843
EXPENSES		
Programs	\$ 1,189,194	\$ 1,331,260
Development	127,332	121,715
Expansion campaign	50,035	51,775
General and administration	473,059	447,713
	1,839,620	1,952,463
Art purchases	14,104	2,300
TOTAL EXPENSES	\$ 1,853,724	\$ 1,954,763
NET OPERATING GAIN/(LOSS)	\$ (285,876)	\$ (80,920)



support and membership

Annual Operating Support

The following donors provided support in addition to membership or gifts to the YAM's Expansion Campaign. See pages 21-23 for membership contributions. Please see page 15 for a list of Expansion Campaign donors since the Campaign's launch in 2006 through June 30, 2016.

Names in **boldface** indicate gifts of \$1,000 or greater. Names in **green** indicate gifts of \$5,000 or greater. Names in *italic* indicate an in-kind gift.

504 Square Feet, Cassy Kramer

Jim Abel and Susan Germer

Acorn Technologies, Inc.

Action Electric Wyoming

Dr. Hewes and Susan Agnew

Rich and Kathy Aldrich

Virginia Allen

Don and Ellen Alweis

American Title & Escrow, Ted & Bess Lovec

American Water Technologies

Bill Anderson

Mike Anderson

Rob Andy

Anonymous

Anonymous

Anonymous

Anonymous

Deborah Anspach and Dr. John Hanson

Linda Armstrong

Art House Cinema

Aspinwall Mountainwear

Jim and Claudia Baker

Barjon's Books

Edward Barta and Barb Gunn

Dr. Randall and Judy Barthelmess

Carole Baumann

Annette Behm

Benefit Party Productions, LLC

Randy and Cheryl Bentley

Joanne Berghold

Lisa and Jeff Berke

Big Dipper Ice Cream

Big Sky ATM

Big Sky Combined Federal Campaign

Billings Junior Woman's Club

Billings Public Library

Billings Scheels

Billings School District #2

Billings Studio Theater

Bistecca

Larry Blackwood

Bridger Steel

Bill Brinkel

Brockel's Chocolates

William Brown and Amy Gibler-Brown

Virginia Bryan

Evan and Amy Buchan

John Buck and Deborah Butterfield

Duncan and Vicki Burford

Dan and Theresa Burkhart

Terry and Muriel Burt

Carbon County Historical Society

Lauren E. Carr

Dan and Lynn Carter

Cenex Harvest States (CHS)

Janet Chapple

City Brew / City Vineyard

Juni and Ray Clark

Michelle Collins

Connoisseur Media

Margaret A. Conover

Steve and Jennifer Corning

Ralph and Sheryl Costanzo

Frank and Kathy Cross

Joy and Gene Culver

Shauna Cumin

Robert Currence

D.A. Davidson, Carl Hansen

Mira Helena Darham

Margaret Davis and Bruce Ennis

Shari and Robert Dayton

DiA Events

David and Janis Dietrich

Discontent

Downtown Billings Alliance

Downtown Billings Partnership, Tax Increment Financing

Carol Drum

Dude Rancher Lodge

Bob Durden

Linda and David Eckhoff

Eco Clean

Eide Bailly, LLP

Jane Elliott

Pat Emerson

Bruce Ennis and Margaret Davis

John and Sarah Etchart

Linda Ewert

ExxonMobil

FaxonMobil

Fanwood Foundation, Mark Stevens

First Interstate BancSystem Foundation

First Interstate Bank

William and Karin Fitzgerald

Mary E. Fitzpatrick

Don and Marilyn Floberg

Stella Fong and Dr. Joe Dillard

Donna M. Forbes

Kay Foster and Mike Mathew

Cynthia Foster

Alice Frank

Stacie and Brett French

Michael and Karen Fried

Gainan's Floral

Bonnie and Michael Garrett

Charles Gilje

Alice Gordon and Paul Grmoljez

John W. and Carol L.H. Green

John Greenberger and Michael Kennedy

Kurt and Tish Guldborg

Ken and Margo Haak

Peter Habein

Harold and Jeanne Habein

Marshall and Gwen Haferkamp

Carol Hagan

Carol and Pat Hagan

Dona and Paul Hagen

Beverly B. Hall

Marie Halone

David T. Hanson

David T. Hanson

Hardin School Districts

Liz Harding

Hardy Construction Company

Hardy Construction Company

Steve and Joni Harman

Russell and Tamara Harvey

Chuck Hauptman

Head Start

Donna and Robert Healy

Susan Scott Heyneman and the Susan Scott Heyneman Foundation

Charles Hingle and Susan Ogden

Wayne and Traci Hirsch

Holiday Stationstores

Home Depot

Homer A. & Mildred S. Scott Foundation

Patricia Hubbard and Terry Fried

Edward Hughes and Roberta Anner-Hughes

Humanities Montana

David and Cynthia Hummel

Jane and Terry Indreland

Institute of Museum and Library Services

Intermountain Distributing Company, Brocopp Family

Barry and Pam Ivanoff

I've Got a Bead on You

Randy and Stacey Jacobs

Patricia Jaffray

Jason and Wendy Jam

Karen and Gene Jarussi

Valeria Jeffries and Allen Powers

Brad and Carole Jensen

Bruce and Lynette Jensen

Diane Boyer Jerhoff

Shannon Burns Johnson

Greg and Shannon Johnson

Judy G. Johnson

Royal and Norma Johnson

Pam Jones and Edward Hahn

Diane Jung

Kathryn Caine Wanlass Charitable Foundation

Frank E. and Margo Kelley

James and Marie Kelly

Kenco Enterprises, Inc.

Kibler + Kirch

Kismet Fine Rugs

Horton Koessler

Kohl's

Gareld and Barbara Krieg

KULR-8 Television

Ellen Kuntz

Nick Lamb

Art and Jo Lamey

Dorothy Long

Bill and Karin Lucas

Lucky's Market

Lumen FX, Inc.

Mac's Floral

Lisa Malody

Kitrina Marcroft

Laurence and Ruth Martin

Mary Alice Fortin Foundation for Youth Enrichment

Tim and Trish Matteson

Larry and Joyce Mayer

Roger and Sylvia McCalla

Gordon McConnell

Sam & Judy McDonald Foundation

Elizabeth McNamer

MDU Resources Foundation

Meadowlark Gallery, Gary Temple

Mediscript

Linda and Bob Merchant

Meridian

Merrill Lynch, Spalding-Houghton Group

Donna J. Meyer

Dr. Blake and Martha Mitchell

Moments in Time

Montague's Jewelers

Montana Art Education Association, Inc.

Montana Arts Council

Montana Brewing Company

Louis R. and Jean Moore

Morris Museum of Art

Moss Mansion

MSU-Billings Sodexo

Patrick and Kyle Neary

Davi Nelson

Neltje Studio

Charles Nightengale

Cal and Judy Northam

NorthWestern Energy

NorthWestern Energy Efficiency Plus Program

O² Architects, P.C., Kim & Don Olsen

O² Architects, P.C., Kim & Don Olsen

Frances Oakland

Janelle Oakland

Oakland & Company, Gary & Melissa Oakland

Carla and Jim O'Rorke

David Orser and Ossie Abrams

James Orser

Carolyn Ostby

Michael Ovitz

Party Solutions

Tana Patterson

Tana Patterson and Brad Aipperspach

Dorothy Peete

Mark and Lori Pehler

Pepsi-Cola of Billings

Perkins Restaurant, Kevin Stenberg

Perkins Restaurant, Kevin Stenberg

Robyn G. Peterson

Robyn G. Peterson

Sharon L. and Garde Peterson

Phillips 66

Pie Guys Pizza

Pita Pit

Kimberly Popp

Victoria Porter

Deborah Potter

Radio Billings

Mark and Christine Randak

Red Rover Bicycles

James Reger

Republic Services

Rib and Chop House

Barbara Richards

Jeff and Jacqui Richey

Sharon Richey

Chaz and Bella Riewaldt

DeDe and Doug Roberts

Dr. Donald and Carol Roberts

Sam Robertus

Rocket Gourmet Wraps

Rocky Mountain College

Tom Romine and Susan Walton

Jim and Lin Roscoe

Roto Rooter Plumbing

William and Laverne Royer

Robert and Sheila Ruble

Sample Foundation

Sam's Club

Sanctuary Spa & Salon, The Joy of

Living, and Kris & Larry Carpenter

Elizabeth Scanlin and Jeff Anderson

Thomas Scanlin

Schnitzer Steel

James R. and Christine M. Scott Family Foundation

Brian Keith Scott

Julia P. Severens

Shaggy Dog Pet Grooming

Susan Shelhamer

Linda Shelhamer and Stephen Haraden

Stephen Haraden

Andrew and Wendy Shelton

Larry and Nina Sheneman

Dr. David and Sandy Shenton

Shepherd School District

Sherwin Williams

Sign Products, Inc., and Paul & Rachel Cox

Bill and Marilyn Simmons

Barb Skelton and Paul Gatzemeier

Corby Skinner

Joan Sleeth

Ronald and Karin Smith

Linda J. Snider

Sodexo at Billings Clinic

Neal and Gigi Sorensen

Dr. Kris Spanjian and Ray Gilbertson

Carol Spielman

Carol and Jim Spielman

Spirit Halloween

Stella's Kitchen & Bakery

Ryan and Molly Stevens

Ed and Jessica Stickney

Stillwater Mining Company

Caryle Streeter

Jack and Andrea Sukin

Renée Tafoya

Tea City

Texas Roadhouse

Bill and Margit Thorndal

Tippet Rise Fund of the Sidney E. Frank Foundation

Steve and Pauline Tostenrud

Toucan Gallery

U.S. Bancorp Foundation

U.S. Bank

Überbrew

Ron Ukrainetz

Obert and Virginia Udem

Bill and Mary Uderinner

United Way of Yellowstone County, Inc.

University of Buffalo Art Galleries

Ruth Urbaska

Anne Veraldi

Veritiv

Marylyn Vincent

Theodore Waddell and Lynn Campion

Webgrain

Wells Fargo Foundation

Western Security Bank

Janet Whaley

John Wilson

Joan T. and Bill Wilson

Rosalie Wynkoop and Josh DeWeese

Ron and Amy Yates

Yellowstone Bank Billings

Yellowstone Calligraphers' Guild

Yellowstone County

Yellowstone Surgery Center, LLC

Donors of Art to the Permanent Collection

Two anonymous donors

The children of Freeman and Daisy Butts

Gary B. Carson

Karen Kallay

Todd Preston

Ken and Ann Shesne

Ed and Jessica Stickney

Willem Volkensz

The Winegardner Family

Gifts in Honor

In honor of **Bill and Sandy Anderson**
Barbara Richards

In honor of **Lisa Berke**
M. Kristine Carpenter

In honor of **Dan Burkhardt**
Obert and Virginia Udem

In honor of **David and Marylee Darby**
Jack and Andrea Sukin

In honor of **Bob Durden**
Theodore Waddell and Lynn Campion

In honor of **Donna M. Forbes**
Gordon McConnell

In honor of **Gordon McConnell**
Donna M. Forbes

In honor of **Robyn G. Peterson**
David Orser and Ossie Abrams
Theodore Waddell and Lynn Campion

In honor of **Linda J. Snider**
Judy G. Johnson

In honor of **Carol Spielman**
Marylyn Vincent

In honor of **Kristi Tolliver**
Mary E. Fitzpatrick

Gifts in Memory

In memory of **Molly Barlow**
Lisa Berke
Robyn G. Peterson

In memory of **Joe Brinkel**
Bill Brinkel
Margaret Conover
Robyn G. Peterson
Kimberly Popp
Sam Robertus
Bill and Margit Thorndal

In memory of **Pat Colberg**
Roger & Sylvia McCalla

In memory of **Dr. C. Jane Estelle**
Charles W. Hingle and Susan K. Ogden

In memory of **Margaret (Peg) Hulteng**
Charles W. Hingle and Susan K. Ogden

In memory of **Jeanne Hutchinson**
Frankie Bennett
Joy Culver
Diane Boyer Jerhoff
Joel Long
Roger & Sylvia McCalla
Jean McNally
Linda J. Snider
Carol Spielman
Don Stanaway
M. J. Staneck
Susan Sullivan
Kristi Summers

In memory of **Connie Landis**
Michelle Olson
Carol Spielman

In memory of **Sally Noe**
Michael & Bonnie Garrett

In memory of **John and Edna Marie Schlitz**
William and Kathe McDaniels

In memory of **Lola Jean Steele**, mother of
Linda J. Snider
Judy G. Johnson

In memory of **Patricia Staunton Etchart**
Sarah and John Etchart

In memory of **Heidi Terese Thometz**
Brandelle M. Grey

In memory of **Fred and Mandy Urbaska**
John & Ruth Urbaska

In memory of **Judy Watson**
William and Amy Gibler-Brown

In memory of **Betty Wilson**
Linda J. Snider

Artists Who Made Full Donations to Art Auction 48

William Anderson
Edward Barta
Larry Blackwood
Shannon Burns Johnson
Mira Helena Darham
Bill Drum † (by his family)
Jane Elliott
Carol Hagan
Stephen Haraden
Jason Jam
Adonna Khare
Ellen Kuntz
Larry Mayer
Neltje
Tana Patterson
Carol Spielman
Echo Ukrainetz
Anne Veraldi
Janet Whaley

Matching Gift Programs

The Yellowstone Art Museum thanks the following businesses, corporations, and foundations for matching their employees' and associates' gifts:

BNSF Railway Foundation
Bank of America / Merrill Lynch
D. A. Davidson & Co.
ExxonMobil
First Interstate Bancsystem Foundation
MorganStanley / SmithBarney
Homer A. and Mildred S. Scott Foundation
U.S. Bancorp Foundation
Wells Fargo Bank

Membership

Life Members

Robert and LaDonna Fehlberg
Donna Forbes
Jet Holoubek
William I. Koch
Christene Meyers
Neltje
Joseph S. Sample
Jackie Tucker
Mary Kay and Dean Wilcox

Annual Members – Business

VIP Business Circle Members (\$5,000)

Hilltop Inn
Riversage Billings Inn

Exhibition Business Circle Members (\$1,000)

Stockman Bank

Collection Business Circle Members (\$500)

Archie Cochrane Ford
Denny Menholt Frontier Chevrolet
Eide Bailly LLP
Holiday Stationstores
Mark Rite Lines Equipment Company, Inc.
O² Architects, PC
Perkins Restaurant

Supporting Business Members (\$250)

Action Electric Wyoming
Advanced Counter Technology
Billings Federal Credit Union
Crowley Fleck Attorneys, PLLP
Ferro, Willet and Thompson, CPAs
Gainan's Floral
Hanson Chemical, Inc.
Hardy Construction Company
Lumen FX, Inc.
Matovich, Keller & Murphy, P.C.
Northam Realtors, LLC
Rector Orthodontics
Sanctuary Spa and Salon
Sign Products, Inc.
Howard Sumner Real Estate

Annual Members – Individual and Family

Patron Circle (\$2,500)

Bob and Linda Merchant
Gary and Melissa Oakland
David Orser and Ossie Abrams

Exhibition Circle (\$1,000)

Dr. Hewes and Susan Agnew
John W. and Carol L.H. Green
Dona and Paul Hagen
Gareld and Barbara Krieg
Tim and Trish Matteson
Patti Morledge
Dr. Walter and Mary Peet

Collection Circle (\$500)

Don and Ellen Alweis
Deborah Anspach and Dr. John Hanson
Janet Carpenter

Dr. Doug and Karla Carr
Patrick and Carla Cobb
Dr. Ralph and Sheryl Costanzo
Dr. Michael and Karen Fried
John Greenberger and Michael Kennedy
Marshall and Gwen Haferkamp
Rich and Sally Hall
Charles Hingle and Susan Ogden
David and Cynthia Hummel
Randy and Stacey Jacobs
Dr. Stephen and Marilyn Kramer
Laurie and Kevin Riley
Bill and Beverly Ryan
George and Patty Selover
Linda Shelhamer and Stephen Haraden
Susan Shelhamer
Susan Sullivan and Steve Zabawa
Valeria Jeffries and Allen Powers
Theodore Waddell and Lynn Campion

Education Circle (\$300)

Eric and Laura Simonsen
Donald and Judy Allen
Dr. Bruce and Susan Barrow
Gilbert Burdett
Dr. John and Patricia Burg
Sherri Cornett and Steve Kriner
Mary Lee and David Darby
Anne Dietrich
Bill and Sharon Dimich
Tom and Joell Doneker
Linda and David Eckhoff
Don and Marilyn Floberg
John and Bess Fredlund
Rita Heizer
Donald and Georgia Hicks
David and Judy Johnson
Neil and Gleva Jussila
Bruce and Anne Marie Lohof
Myrna and Craig Martinson
Jean McNally
Ty and Mendy Nelson
Frances Oakland
Carla and Jim O'Rorke
Donna and Ken Rambold
Robert and Nancy Schultz
Linda J. Snider
Steve and Pauline Tostenrud
Ed and Jessica Stickney

Aficionado (\$125)

Dr. Steven Arbogast and Cynthia Brewer
Jeanne and Ron Bender
Lisa and Jeff Berke
Francis and Sandra Blake
James Brien and Hollis Hall
Virginia Bryan
Gary and Norma Buchanan
Daniel Caplan
Andy and Becky Carroll
Vickie Christie and John Battaglia
Renee and Dave Coppock
James and Joanne Corning
Steve and Jennifer Corning
Julia Cruse
Clayton and Lynne Cummins
Jill Diercks
Stella Fong and Dr. Joe Dillard
John and Janice Fordham

Cynthia Foster
 Don and Shirley Frohlich
 Angus and Marjorie Fulton
 Steve Gardner
 Steve and Doris Gerstner
 Kristine Glenn
 Mike and Cathy Glennon
 Dr. James and Margaret Good
 Jeffrey and Kerry Gruizenga
 Walter and Barbara Gulick
 Scott Harrington
 James and Lillian Hartung
 Joan Haseltine
 Donna and Robert Healy
 Patrick and Rebecca Houghton
 Edward Hughes and Roberta Anner-Hughes
 Jane and Terry Indreland
 Judy G. Johnson
 Shauna Kerr
 David and Marilyn Klein
 William and Claire Leslie
 Priscilla Lund
 Robert and Sharon McDermott
 Precious McKenzie and William Stearns
 Lloyd Mickelson
 Rhonda and Daniel Molloy
 Penny Morgan
 Karen Musgrave
 Tanya Myers
 Davi Nelson
 Thomas and Bettina Nelson
 David Patterson and Mary Palffy
 Phil and Dee Perlewitz
 Dale and Judy Peterson
 Sharon L. and Garde Peterson
 Russ and Susan Plath
 James and Constance Pollak
 Dr. Jim Rollins and Dr. Julie Johnson
 Tom Romine and Susan Walton
 Bernard Rose
 J. Dwaine Roybal
 Robert and Sheila Ruble
 Roger and Susan Santala
 Cara and Michael Schaer
 Janet Schweitzer and Rich Gibson
 Stephen and Katherine Shandera
 Dr. George and Olivia Sheckleton
 Andrew and Wendy Shelton
 Tom Singer and Evey LaMont
 Ronald and Karin Smith
 Per and Nadine Sommer
 Dr. Kris Spanjian and Ray Gilbertson
 Louise Spaulding and Dick Rigney
 Elvia Stockton
 Penelope Stong
 Dean and Lisa Sukin
 Renée Tafoya
 Bill and Margit Thorndal
 Obert and Virginia Udem
 Willem and Diane Volkersz
 George R. Wanlass and Karen Carson
 Jennifer Webber
 Ron and Amy Yates
 Anne Young and Jim Nielson

Full House (\$65)

Jim Abel and Susan Germer
 Rory and Jennifer Adams
 Mr. Mark Ager
 David and Kathleen Agnew
 Rich and Kathy Aldrich

Bunny Allen
 Sheldon Alweis
 Lee and Maggie Arbuckle
 Dr. Jim Peak and Dr. Fran Argani
 Dr. Enrico and Martha Arguelles
 Scott and Donna Armstrong
 Ray and Sue Armstrong
 Jim and Christie L. Baken
 Jim and Claudia Baker
 David Bakken
 Craig Bane and Keith Peterson
 Uri and Lizbeth Barnea
 Carole Baumann
 Christi Beals
 Daryl and Carol Beam
 Lisa Beaudin
 Jennifer Beck
 Jennifer Beeman
 Jim and Priscilla Bell
 Phil and Nada Bell
 Joanne Berghold
 Barbara Bernheim and John Felten
 Dan and Kay L. Berry
 Wayne and Jean Biberdorf
 Bill and Sandy Anderson
 Bill Clagg
 Nancy Petersen
 Steve and Jane Bjordahl
 Dr. Wiley and Marilyn Bland
 Terese and Keith Blanding
 John and Judy Boehmke
 John Bohlinger
 John and Mary Ann Bottman
 Joel Bowers and Lisa Carnicom
 Catherine Grace and Victor Bracht
 Nancy Brook and Michael Carlson
 Dr. Brian Bross and Bonnie Daniels
 William Brown and Amy Gibler-Brown
 Ramona Bruckner
 Tiffany Bruckner
 Judy Buchanan
 Pam and Dale Bull
 Duncan and Vicki Burford
 Dan and Theresa Burkhart
 Ron and Judith Burnam
 Terry and Muriel Burt
 Steven and Lucinda Butler
 Jane and Bill Carlson
 Tim Cavan
 Vickie Christie and John Battaglia
 Mona Clark
 Bill and Diane Cochran
 Stuart W. Conner and Susan McDaniel
 Cynthia Corbridge
 Mark Cotner
 Phillip and Carol Cowan
 Ryan and Holly Cremer
 John and Cynthia Crist
 Brent and Dorothea Cromley
 Joe and Cathie Cross
 Ray and Dorothy Curtis
 Leonard and Marguerite Dahl
 Daniel and Susannah Casey
 Jamie DeBree
 Michele DeGroat
 Pam and Tom Dimich
 Christl Domina
 Kevin Dowling and Elizabeth Ching
 Kally and Bill Dreikosen
 Patricia Durden and Roze Walker
 Lyla Dyer and Cheryl Hudson
 Michelle Dyk and David Cleaves
 Betty and William Eaton
 Dr. Charlotta Eaton and Curtis Starr

Tom and Julie Ebzery
 Robert and Roberta Ehli
 Catherine Eithier
 Audrey and Emil Erhardt
 Doug and Vanessa Fahlgren
 Leila Farnum and Donald Seibert
 Michelle Fast
 Steve and Linda Fenter
 Fred L. and Rose Marie Fleischmann
 Hal and Lori Forseth
 Corby and Rene Freitag
 Jennifer and Robert French
 Stacie and Brett French
 Charles and Joan Fritz
 Nicole Gallagher and Neil Kiner
 Dennis and Terri Gambill
 George T. and Candace Kimmet
 Theresa Gong and Jim Seaton
 Alice Gordon and Paul Grmoljez
 Paige Gottwals
 Jim and Karen Gransbery
 Jody Grant
 Ed Gulick and Joy Barber
 Peter and Teresa Habein
 Dennis Hall and Robyn Butler-Hall
 Hal and Whitney Hansen
 Carol Hardy and Charlie Donnes
 Steve and Joni Harman
 Lisa K. and Mike Harmon
 Marjorie Harpold and Edmund Weninger
 Brian and Molly Harrington
 Bill and Betty Hart
 John and Karen Haughey
 J. William and Janet Hawk
 Dr. David Healow and Connie Oser
 Mark and Melody Heide
 Lena and Ken Heikes
 Jim and Linda Heins
 Sue and Brooke Henderson
 Tarah Hilbrand
 Mitch and Becky Hillier
 Gordon and Susan Hills
 David and Maggy Hiltner
 Dr. Eugene and Sharon Hockett
 D'Anne and Paul Holley
 Lance Hoskins
 Patricia Hubbard and Terry Fried
 Janie and Willard Hull
 Jerry and Linda Iverson
 Katherine Jabs
 Rebecca and Dean Jackman
 Corey Jacobson
 Tom James
 Karen and Gene Jarussi
 Joan T. and Bill Wilson
 JoAnn Stevens
 Lee and Nancy Jockers
 Jasen and Sandra Johnson
 Kevin and Janis Johnson
 Pierre and Sandy Jimini
 Pam Jones and Edward Hahn
 Shelece Jorgenson
 Bruce and Anne Kania
 Kathy and Steve Sorch
 Donald Redfoot & Kathy Kenyon
 Frank and Peggy Kestner
 Jan Kirk
 Jacquie Kittson and Eileen Pritting
 Phoebe Knapp-Warren and Paul Warren
 Keith and Donna Kohnke
 Nyd and Alan Kraushaar
 Lana Krull Gar
 Joseph and Kara Landry
 Robert LaRoche and Bonnie Bozarth

Jim and Jean LeBar
 Dave and Stephanie Lefevre
 Tim Lehman and Danell Jones
 Linda Raynolds and Elijah Cobb
 Tracy and Mike Linder
 Julie and Leif Linderman
 Lee Lindsey and Brenna Paulson
 Lisa Rausch and Tom Foubert
 Joel and Andrea Long
 Betty Loos
 Loran and Peggy Salsbury
 Ted and Bess Lovet
 MK Gartland and Thomas Lynaugh
 John and Susan Lyons
 Margie MacDonald
 Bruce and Linda Kay MacIntyre
 Robert Mackin and Elizabeth Adcock
 Bill and Jeanne Manske
 Jim Gutenkauf and Lynn Marquardt
 Jason Martin
 Corrina Graham Martin and Maury Martin
 Rossco Martin
 Alex and Sharon McDougal
 Joseph and Suzanne McKiernan
 Mary McNally and Monte Smith
 Bradley McPherson
 Walter and Jean Mehlhaff
 Gary and Virginia Mermel
 Ann and Paul Miller
 Marilyn Miller and David Craig
 Adam and Sarah Milligan
 Downell Monette
 Susan Morgan and John Russell
 Gary and Dotti Mueller
 William Muldoon and Suzanne Belser
 Fred and Patsy Muller
 Dr. David and Nancy Myers
 Randy and Jeanne Nafts
 Susie and Bruce Nathan
 Dr. Jim and Anne Nichols
 Carlene Nightingale and Ernest Ross
 Allison O'Donnell and Mark Sanderson
 Richard and Katherine Olson
 Shirley Olson
 Michael Ormsby
 Brad Aipperspach and Tana Patterson
 Dorothy Peete
 Mark and Lori Pehler
 Eric and Kim Peterson
 Catherine and Maurie Petterson
 John and Diana Pollock
 Victoria Porter
 Pauline Powers
 Dr. Robert and Mrs. Virginia Pueringer
 Matt and Amy Queen
 Scott Rainey
 Tracy Rausch
 Lee Reichel
 Sandra Reiter
 Janis and Gary Restad
 Mark and Veronica Restad
 Janet and Richard Reynolds
 Kyle and Connie Rice
 Darren and Nikki Rich
 Bob and Thelma Rickels
 Charles and Emily Ringer
 Stephen and Susan Robbins
 Perry and Sue Roberts
 Christine Roesch
 Jim and Lin Roscoe
 Janella Rose
 George and Heather Rosenfeld
 Bev and Sig Ross
 Wendy Ross

Dale Ruff
 Steve Rundle
 Joezette Russell
 Bruce and Marilee Ryniker
 Jessie and Sande Sawicki
 John and Connie Schafer
 Patrick Schelle
 George Schissler
 Dennis Schuld
 Barry and Arlee Scott
 James Clark and Judith Senteney
 Dr. Brendan and Michelle Shannon
 Brian and Erica Shea
 Barb Skelton and Paul Gatzemeier
 Gary Paul Smith
 Jo Reid and William Smith
 Margaret and Kenneth Smith
 Jack and Claire Snyder
 Dave and Sandy Solberg
 Robert Sorensen
 Karen Stanton
 Kevin Stockdale
 Patrick Sweeney and Teresa Erickson
 Renée Tafoya
 Lionel and Vicki Tapia
 Tony Thompson and Sonya Buller
 Chuck and Joanie Tooley
 Laurie Townsend
 Ned and Virginia Tranel
 Marc and Melissa Tschetter
 Thomas Tully and Barbara Archer
 Marcus and Wendy Vacca
 Ray and Carol Van Tuinen
 Leon and Carol Wald
 Roy Warner
 Donna Lee Weaver
 Linda and Thomas Weeks
 Theodore and Barbara Weiss
 Carol and John Welch
 Richard Westberg
 Janice White
 Craige Whiteley and Kathleen Benoit
 Betty and Paul Whiting
 James and Julie Whitworth
 Helen Widenhofer
 Dr. Mark and Josi Wilgus
 Roger and Patricia Williams
 Michael and Coni Wilson
 Suzanne Wilson
 Charles Wittnam and Patricia Payne
 Daniel and Michelle Wohlgenant
 Wilbur and Elizabeth Wood
 Daniel and Sharon Yazak
 David and Millie Yelvington
 David Young and Tina Raffael
 Patrick and Suzie Zentz
 Michael S. Zurcher

Enthusiast (up to \$40)

Kathleen Adamson
 Deirdre Alexander
 Maxine Allman
 Anita Anderson
 Sandra Anderson
 Rob Andy
 Nancy Archer
 Diane Arkava
 Abi Ashcraft
 Brooke Atherton
 Adela Awner
 John Baber
 Joe Bailey
 Susan Barnes
 Kim Barnett
 Debbie Barrow
 Janet Bedford
 Michelle Berger

Jennifer Berry
 Fran Bertholet
 Beverly B. Hall
 Monica Borer
 Jaclynn Bowers
 Jade Bradford
 Anna C. Brewer
 Stanley Bruce
 Jennine Budge
 Michael Burns
 Elizabeth Burton
 Janet Butorovich
 Marion Cadwell
 Lauren E. Carr
 Chris Miller
 Alan Christensen
 Linda Christensen
 Clare Cavan
 Michelle Clement
 Susan Clendenin
 Norma Cleveland
 Stephanie Clifton
 Shirley Collins
 Michiko Conklin
 Jerry Cornish
 Martha J. Crandall
 Diana Crants
 Bruce Crippen
 Nancy Curriden
 Liza Dada
 Sandra dal Poggetto
 Joyce Dalton
 Sondra Daly
 Doug Darkenwald
 Georgiann Deckard
 Ashley Di Fronzo
 Connie Dillon
 Rosalind Dina
 Karen Dooley
 Martin Doornek
 Lenny Duberstein
 Chelsea Dahlstrom
 Karen Durfey
 Mark Earnhart
 Ruth Eaton
 Reta Rae Eby
 Richard Ellis
 Jackie Emery
 Margaret S. English
 Lynne Erickson
 Laura Estes
 Rita Feller
 Karen A. Ferguson
 Anne Finley
 Candace Forrette
 Lance Elliot Four Star
 Wes Frank
 Judi Fraser
 Brad Fuller
 Janet Ganson
 Barbara Garrett
 Georgette Gee
 Richard Gessling
 Sandy Gillitzer
 Clara Goodman
 Bev Gormley
 Reverend Daphne B. Grimes
 Donna Groepler
 Pamela A. Gustafson
 Ann Hafer
 Michael Hall
 Sue Hammersmark
 Victoria Hammond
 Laurel Hanson
 Maxine Hanson
 Linda Harris
 Mona Harris
 Sharon Harris
 Peg Hart

Trenay Hart
 Ralph B. Havin
 Lynda Hayward Carroll
 Kat Healy
 Mary Beth Helgeson
 Susan Henry
 Lindalee Hickey
 Ellen Hilde
 Marsha Hill
 Robert Hill
 Carolyn Holmlund
 Roger Holt
 Don Holzheimer
 Barbara Hopkins
 Elaine House
 Peggy Hubley
 Craig Huisenga
 Nellie Israel
 Linda Jackson
 Janice Buehler
 Margaret Johnson
 Mary Jo Johnson
 Ann Jones
 Juliette Kurtz
 Diane Jung
 Tyler Kaftan
 Colin Kampschroer
 Aiko Kawano
 P. R. Kelley
 Diane Kersten
 Kristeen Keup
 Julie Kibler
 Theodore Kinsell
 LaFawn Kleinsasser
 Ellen Knight
 Jan Kransky
 Kayla Krenzler
 Kristi Tolliver
 Roland Krumins
 Diane Kylander
 Sue LaFountain
 Mary LaMonaca
 Jennifer Larson
 Rachel Larson Long
 Nancy Lasater
 Marilyn Laughery
 Carolina Lauver
 Patricia Lee
 Barb Leininger
 Linda Lemire
 David Leuthold
 Jodi Lightner
 Donna Lincoln Smith
 Kathleen Lombardozzi
 Vince Long
 Megan Lorentz
 Janet Ludwig
 Alice Lundgren
 Johnathan Lutz
 Charlene Magargal
 Terri Malucci
 Dr. Kathleen B. Masis, M.D.
 Deborah Mattern
 Melinda Maurisak
 Mary Lou Mayes
 Marge McArthur
 Sally McIntosh
 Sherina McIntyre
 Maxey Megrue
 Alice Meister
 Joan Michael
 Becky Mitchell
 Aletha Mitzman
 Jennifer Moller
 Kim Montag
 Christine Mullaney
 Phyllis Murphy
 Tyler Murphy
 Louise Murray

Gail Neal
 Barbara Needham
 Laila Nelson
 Pamela Nelson
 Vicki Nelson
 Steve Nesterak
 Jean Neyrinck
 Randi O'Brien
 R. Mikell O'Donnell
 David Omen
 Kaitlin O'Neil
 Carolyn Ostby
 Sylvia Parman
 Donna Pavlish
 Susan Peacock
 Sally Phillips
 Jean Posusta
 Deborah Potter
 Sharie Pyke
 Mur Louisa Quaglia
 Jaq Quanbeck
 Barb Ramlow
 Eric Ramsett
 Phyllis McBride Ratcliff
 Diane Reichenberg
 Steve Restad
 Sharon Richey
 John C. Rogers
 Mary Salle
 Monica Santos
 Thomas Scanlin
 Dr. Rachel Schaffer
 Judith Schlosser
 Karl W. Schmiedeskamp
 Cecily Schroeffer
 Duane Schultz
 Susan Scott Heyneman
 Lucille Scott
 Sharon Shannon
 Sandy Short
 James Siegman
 Corby Skinner
 Cindy Lou Smith
 Lori Smith
 Brownie Snyder
 Kaylin Song
 Linda Spear
 Tenley Spear
 Shirley Speare
 Dick Brosseau
 David Stahl
 Nancy Standley
 Dean States
 Richard Steel
 Shirley Steele
 Sharon Steppler
 Sandra Subotnick
 Donna Sweeney
 Leslie Taylor
 Gerry Thompson
 Lynn Thorpe
 Carolyn Torske
 Linda VanSky
 Sandy Vancleeve
 Ragan Volk
 Elizabeth Waddington
 Joannette Wagner
 Joan Wakley
 Wanda Walker
 Denice Waller Fraser
 Connie Wardell
 Janet Weisz
 Ed and Pat West
 Dr. Thomas Wickliffe
 Rebecca A. Wiehe
 Tara Williamson
 Deb Wines
 Ronald B Wolf
 Joyce Wuertz

The staff and Board of Trustees of the Yellowstone Art Museum extends its sincere thanks to all of our members, donors, and volunteers. The YAM could not accomplish its many and varied programs without you! If we have inadvertently omitted or misspelled any names, please accept our sincere apologies and contact our membership office immediately so that we may correct our records (membership@artmuseum.org or 406-256-6804, x222).







yellowstone**art**museum

401 North 27th Street, Billings, MT 59101
406-256-6804 • www.artmuseum.org